

# RICHMOND COMMUNITY SCHOOLS GREAT START LUNCH MENU — FEBRUARY 2023

## MONDAY

## TUESDAY

## WEDNESDAY

## THURSDAY

## FRIDAY



*Richmond Community Schools  
Will participate in MI Farm to School. (\*)  
= food choice  
utilizing MI based items.*

1

WG Rotini w/ Beef Meat  
Sauce

Steamed Broccoli  
Fresh Bananas

1% Unflavored Milk



2

Lil Caesars Pepperoni Pizza

Romaine Salad  
Fresh Apple Slices\*

1% Unflavored Milk



3

No School



6

WG Chicken Tenders  
WG Dinner Roll

Corn  
Fresh Apple Slices\*

1% Unflavored Milk

7

WG Cheesy Bosco Sticks

 Carrot Coins  
Diced Peaches

1% Unflavored Milk

8

WG Mac & Cheese

Steamed Broccoli  
Fresh Orange Slices

1% Unflavored Milk



9

Lil Caesars Cheese Pizza

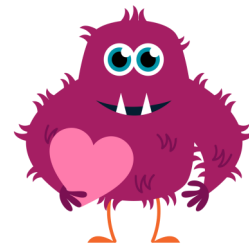
Romaine Salad  
Diced Pears

1% Unflavored Milk



10

No School



13

WG Chicken Drumstick  
WG Dinner Roll

 Corn  
Mixed Fruit

1% Unflavored Milk

14

Turkey Frank Hot Dog on  
WG Hot Dog Bun

Potato Smiles  
Diced Peaches

1% Unflavored Milk



15

WG Rotini w/ Beef Meat  
Sauce

 Steamed Broccoli  
Fresh Banana

1% Unflavored Milk

16

Lil Caesars Pepperoni Pizza

Romaine Salad  
Fresh Apple Slices

1% Unflavored Milk



17

No School



20

No School




21

WG Cheesy Bosco Sticks

Carrot Coins  
Diced Peaches

1% Unflavored Milk

22

WG Mac & Cheese 

Steamed Broccoli  
Fresh Orange Slices

1% Unflavored Milk

23

Lil Caesars Cheese Pizza

Romaine Salad  
Diced Pears

1% Unflavored Milk

24

No School



27

WG Chicken Patty  
Sandwich w/  
WG Hamburger Bun

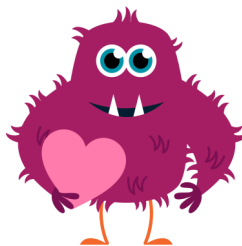
Corn  
Fresh Apple Slices  
1% Unflavored Milk

28

WG Turkey Corn Dog

Carrot Coins  
Diced Peaches

1% Unflavored Milk



Each meal includes choice of entrée, milk, one cup of vegetable items and 1/2 cup of fruit items. A fruit or vegetable serving is required with every reimbursable meal. Seasonal fresh fruit selections will include apples, oranges, watermelon, cantaloupe, bananas, pears, grapes, pineapple.

Milk choices include fat free or 1% unflavored, and fat free chocolate or strawberry flavored.

\*Menu Subject to Change Without Notice\*

Nutritional information is available on the Food Service web page of the Richmond Community School District Website.

"USDA is an equal opportunity provider and employer"